

# PORTABLE LUBRICATION MANAGEMENT CATALOG



# D SERIES DRUM FILTER CART



## All-In-One Convenience!

All-in-one convenience is what the DC-D Drum filter cart is all about. The simple practicality of this cart allows the operator to dispense and filter oil out of a 55 gallon drum on wheels. A magnetic kickstand adds stability and ensures the drum will not tip over. The drum filter cart has ability to filter oil viscosities up to 600cSt (ISO VG 680) at 100F within ambient temperature ranges of -15F to 150F. All Y2K products are 100% customizable upon request.

## Typical Applications

- Pre-filtering new oil
- Transferring oils
- Topping off reservoirs
- Dispensing new oil

# ForFluids.com

# D SERIES DRUM FILTER CART

Don't see the options you need?  
Contact For Fluids at 1(630) 922-5020  
for more information.

## Performance:

For filtering mineral and synthetic based oils (hydraulic oils, gear oils and turbine oils) with a maximum operating viscosity range of ISO VG 680 (3000ssu/648cSt) at 100 °F within ambient temperature ranges of -15 °F to 150 °F.

## Standard Features:

### Materials:

- Frame: Carbon steel with magnetic kickstand
- Paint: Multiple color options available
- Motor: 1HP, 115vac, 60Hz or Pneumatic
- Filter Heads: Medium pressure, cast aluminum heads
- Pump: Heavy duty, cast steel gear pump. Available in 1, 2, 5 and 10 GPM
- Connections: Various quick connect options available
- Hoses: 7ft. Clear PVC, steel reinforced hose or hydraulic hose
- Power Switch: Sealed On/Off Power Switch

### Filter Indicators:

- Slide bar differential indicators trigger at 50 psid when elements need to be changed

### Pump Relief:

- Opens at 150psi

### Weight:

- Approx. 145lbs (will vary depending on options)

### Dimensions:

- Approx. 23"L x 21"W x 59"H

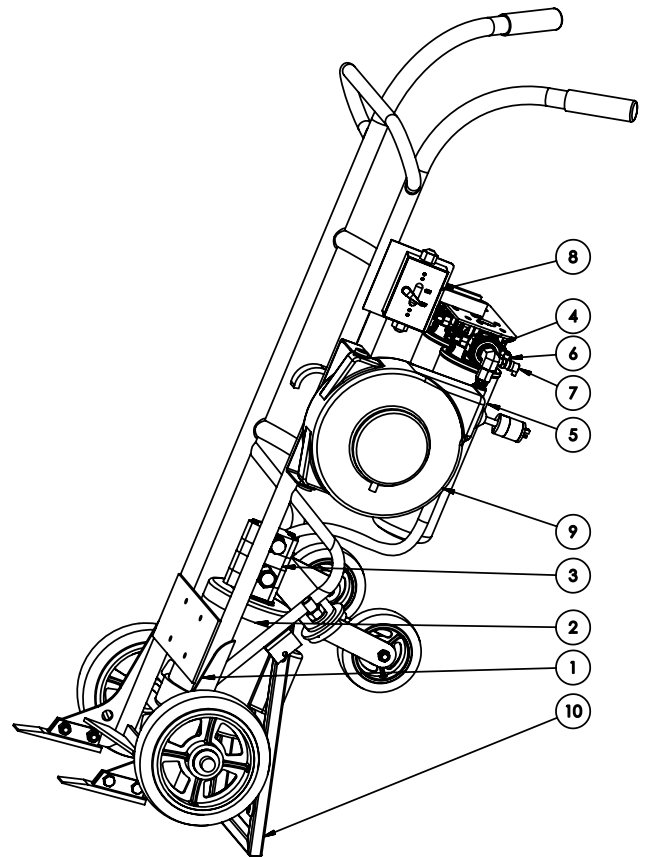
## Replacement Elements:

Part Number	BETA Rating	Desired Cleanliness Level (ISO Code)
P1066	$\beta_{4(c)}=2000$	14/12/9 - 13/11/8
P1065	$\beta_{7(c)}=2000$	18/16/13 - 15/13/10
P1063	$\beta_{10(c)}=1000$	19/17/14 - 18/16/13
P1064	$\beta_{25(c)}=2000$	20/18/15 - 19/17/14
P1048WR	Water Removal	

All D Series elements measure 5" x 14".

## Components:

Item Number	Description	Qty.
1	Heavy Duty Drum Cart	1
2	Motor	1
3	Gear Pump	1
4	Filter Head	2
5	Filter Element	2
6	Filter Indicator	2
7	Sample Port	2
8	Switch On/Off	1
9	Cord Reel	1
10	Kick Stand	1



# ForFluids.com

1-630-922-5020

# D SERIES DRUM TOPPER

## Compact and Portable!

Compact and portable, the DTD Drum Topper is designed to fit perfectly on top of a 55-gallon drum. When portability and convenience is of the utmost importance, the Drum Topper has your back. With the ability to be used horizontally or vertically, our drum topper is the most versatile in the industry. It has the ability to filter oil viscosities up to 600cSt (ISO VG 680) at 100F within ambient temperature ranges of -15F to 150F.

## Typical Applications

- Pre-filtering new oil
- Transferring oils
- Topping off reservoirs
- Dispensing new oil



# ForFluids.com

1-630-922-5020

# D SERIES DRUM TOPPER

Don't see the options you need?  
Contact For Fluids at 1(630) 922-5020  
for more information.

## Performance:

For filtering mineral and synthetic based oils (hydraulic oils, gear oils and turbine oils) with a maximum operating viscosity range of ISO VG 690 (3000ssu/648cSt) at 100F within ambient temperature ranges of -15F to 150F

## Standard Features:

### Materials:

- Frame: Heavy duty steel frame
- Paint: Multiple color options available
- Motor: 1/2HP, 115vac, 60Hz
- Filter Heads: Dual stage, Low pressure, aluminum heads
- Pump: Heavy duty gear pump. Available in 1, 2 and 5 GPM
- Connections: Various quick connect options with steel dust plugs
- Hoses: 2ea, 7ft. Clear PVC, steel reinforced suction & discharge hoses
- Power Switch: On/Off Toggle Switch

### Filter Indicators:

- Slidebar differential indicators trigger at 50 psid

### Pump Relief:

- Opens at 150psi

### Weight:

- Approx. 38lbs (will vary depending on options)

## Replacement Elements:

Part Number	BETA Rating	Desired Cleanliness Level (ISO Code)
P1066	$\beta_{4(c)}=2000$	14/12/9 - 13/11/8
P1065	$\beta_{7(c)}=2000$	18/16/13 - 15/13/10
P1063	$\beta_{10(c)}=1000$	19/17/14 - 18/16/13
P1064	$\beta_{25(c)}=2000$	20/18/15 - 19/17/14
P1048WR	Water Removal	

All D Series elements measure 5" x 14".

## Components:

Item Number	Description	Qty.
1	Frame	1
2	Motor	1
3	Pump	1
4	Filter Head	2
5	Filter Element	2
6	Filter Indicator	2
7	Switch On/Off	1
8	Cord	1



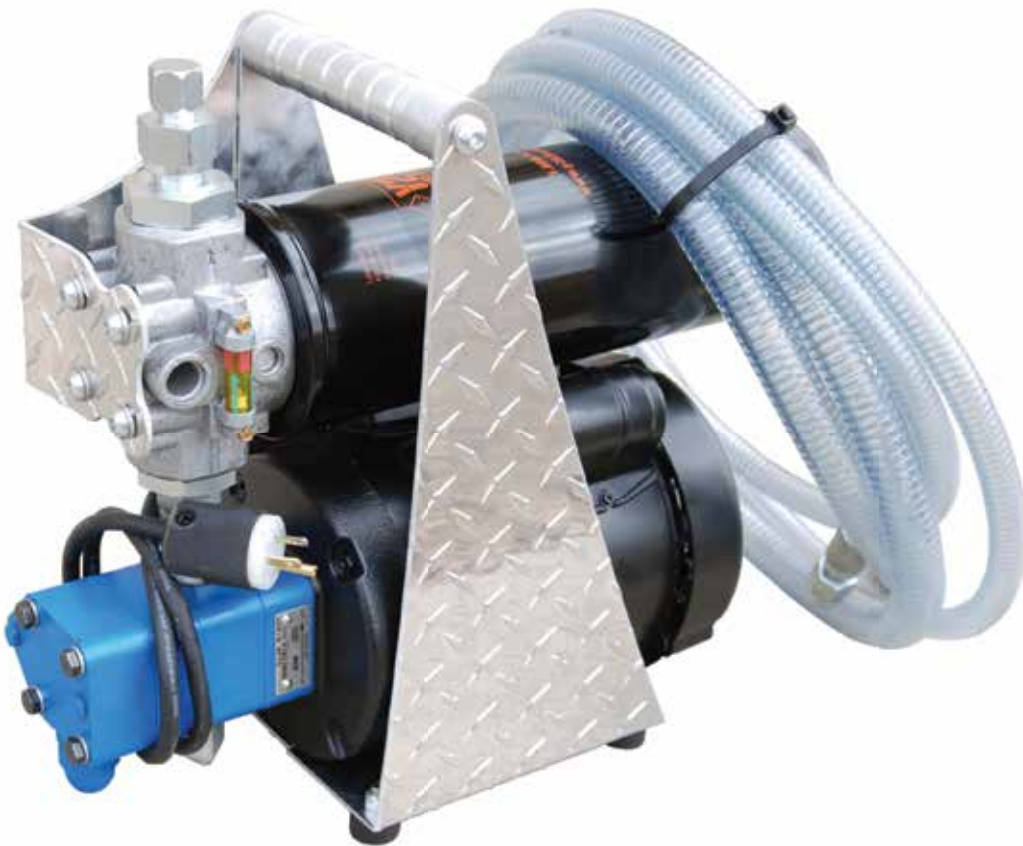
# ForFluids.com

1-630-922-5020

# D SERIES FILTERPAK

## Convenient & Compact!

Perfect for situations with minimal storage space, the FP-D FilterPak combines style and convenience in a compact design that allows the operator to carry it just about anywhere. This powerhouse has the ability to filter oil viscosities up to 600cSt (ISO VG 680) at 100F within ambient temperature ranges of -15F to 150F. All Y2K products are 100% customizable upon request.



## Typical Applications

- Filtering contaminated system
- Flushing new or repaired systems
- Pre-filtering new oil
- Transferring oils
- Topping off reservoirs
- Dispensing new oil

# ForFluids.com

1-630-922-5020

# D SERIES FILTERPAK

Don't see the options you need?  
Contact For Fluids at 1(630) 922-5020  
for more information.

## Performance:

For filtering mineral and synthetic based oils (hydraulic oils, gear oils and turbine oils). This powerhouse has the ability to filter oil viscosities up to 600cSt (ISO VG 680) at 100F within ambient temperature ranges of -15F to 150F.

## Standard Features:

### Materials:

- Frame: Heavy duty, diamond plated aluminum frame
- Motor: 1/4HP, 1/2HP or 1HP, 115vac, 60Hz
- Filter Heads: Medium pressure, cast aluminum heads
- Pump: Heavy duty, cast steel gear pump. Available in 1, 2, 5 and 10 GPM
- Connections: Various quick connect options available
- Hoses: 7ft. Clear PVC, steel reinforced hose or hydraulic hose
- Power Switch: Sealed On/Off Power Switch

### Filter Indicators:

- Slide bar indicator triggers at 50psid when elements need to be changed.

### Pump Relief:

- Opens at 150psi

### Weight:

- Approx. 50lbs (will vary depending on options)

### Dimensions:

- Approx. 8"L x 16"W x 16"H

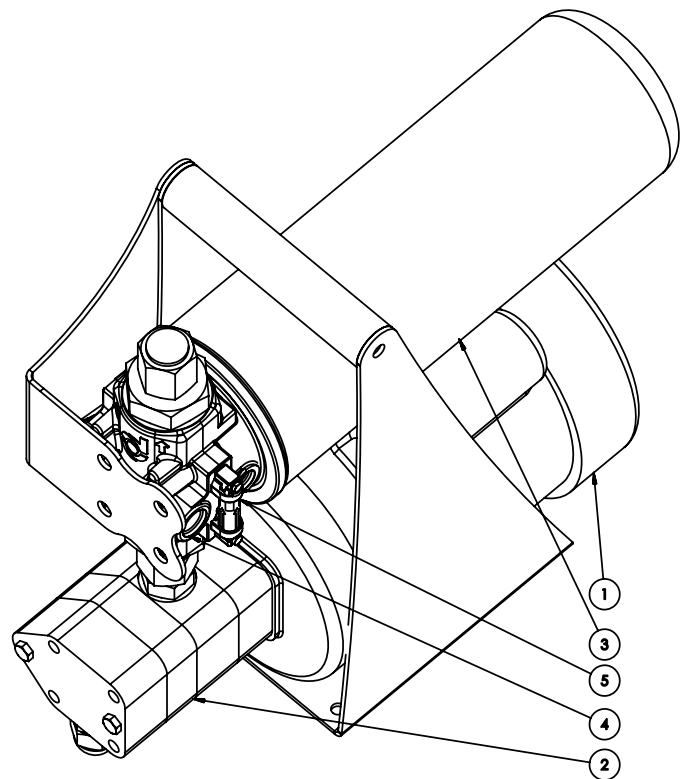
## Replacement Elements:

Part Number	BETA Rating	Desired Cleanliness Level (ISO Code)
P1066	$\beta_{4(c)}=2000$	14/12/9 - 13/11/8
P1065	$\beta_{7(c)}=2000$	18/16/13 - 15/13/10
P1063	$\beta_{10(c)}=1000$	19/17/14 - 18/16/13
P1064	$\beta_{25(c)}=2000$	20/18/15 - 19/17/14
P1048WR	Water Removal	

All D Series elements measure 5" x 14".

## Components:

Item Number	Description	Qty.
1	Motor	1
2	Pump	1
3	Filter Element	1
4	Filter Head	1
5	Filter Indicator	1



# ForFluids.com

1-630-922-5020

# D SERIES PANEL UNIT

## Compact and Portable!

When you need to install a permanent, continuous duty solution for your offline filtration, the PU-D Panel Unit is the perfect solution. Available in a variety of sizes, it will suit any space requirement you may have. These filtration systems have all the power needed for filtering oil viscosities up to 600cSt (ISO VG 680) at 100F within ambient temperature ranges of -15F to 150F. All Y2K products are 100% customizable upon request.

## Typical Applications

- Filtering contaminated systems
- Collecting oil samples for analysis
- Dispensing new oil
- Permanent installations



# ForFluids.com



# D SERIES PANEL UNIT

Don't see the options you need?  
Contact For Fluids at 1(630) 922-5020  
for more information.

## Performance:

For filtering mineral and synthetic based oils (hydraulic oils, gear oils and turbine oils) with a maximum operating viscosity range of ISO VG 680 (3000ssu/648cSt) at 100 °F within ambient temperature ranges of -15 °F to 150 °F.

## Standard Features:

### Materials:

- Frame: Carbon steel with drip tray
- Paint: Multiple color options available
- Motor: 1HP, 115vac, 60Hz or Pneumatic
- Filter Heads: Medium pressure, cast aluminum heads
- Pump: Heavy duty, cast steel gear pump. Available in 1, 2, 5 and 10 GPM

### Filter Indicators:

- Slide bar indicator triggers at 50psid when elements need to be changed.

### Pump Relief:

- Opens at 150psi

### Weight:

- Approx. 75-80lbs (will vary depending on options)

### Dimensions:

- Approx. 24"L x 12"W x 29"H

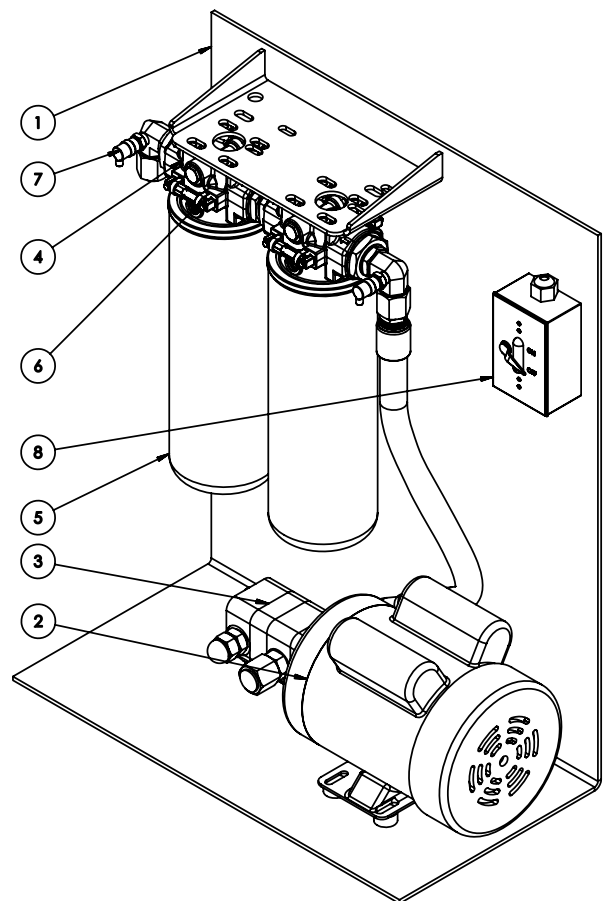
## Replacement Elements:

Part Number	BETA Rating	Desired Cleanliness Level (ISO Code)
P1066	$\beta_{4(c)}=2000$	14/12/9 - 13/11/8
P1065	$\beta_{7(c)}=2000$	18/16/13 - 15/13/10
P1063	$\beta_{10(c)}=1000$	19/17/14 - 18/16/13
P1064	$\beta_{25(c)}=2000$	20/18/15 - 19/17/14
P1048WR	Water Removal	

All D Series elements measure 5" x 14".

## Components:

Item Number	Description	Qty.
1	Large Panel	1
2	Motor	1
3	Pump	1
4	Filter Head	2
5	Filter Element	2
6	Filter Indicator	2
7	Sample Port	2
8	Switch On/Off	1



# ForFluids.com

1-630-922-5020

# D SERIES 4 WHEEL T-3 TOTE



## Most Versatile Tote!

The T-3 Tote is the most versatile tote we make. With its 30 gallon tank, this tote makes filtering, transferring, and topping off reservoirs a breeze. It can fill itself, be used as an off-line filter for cleaning different reservoirs, and to pump oil into various containers. This tote has all the power needed for filtering oil viscosities up to 600cSt (ISO VG 680) at 100F within ambient temperature ranges of -15F to 150F. All Y2K products are 100% customizable upon request.

## Typical Applications

- Filtering contaminated systems
- Flushing new or repaired systems
- Pre-filtering new oil
- Transferring oils
- Topping off reservoirs or containers
- Dispensing new oil

# ForFluids.com

# D SERIES 4 WHEEL T-3 TOTE

Don't see the options you need?  
Contact For Fluids at 1(630) 922-5020  
for more information.

## Performance:

For filtering mineral and synthetic based oils (hydraulic oils, gear oils and turbine oils) with a maximum operating viscosity range of ISO VG 680 (3000ssu/648cSt) at 100 °F within ambient temperature ranges of -15 °F to 150 °F.

## Standard Features:

### Materials:

- Frame: Carbon steel, 30 gallon tank with 4 wheels
- Paint: Industrial powder coat; various colors available
- Motor: 1HP, 115vac, 60Hz or Pneumatic
- Filter Heads: Medium pressure, cast aluminum heads
- Pump: Heavy duty, cast steel gear pump. Available in 1, 2, 5 and 10 GPM
- Connections: Various quick connect options available
- Hoses: 7ft. Clear PVC, steel reinforced hose or hydraulic hose
- Power Switch: Sealed On/Off Power Switch
- Desiccant Breather included

### Filter Indicators:

- Slide bar indicator triggers at 50psid when elements need to be changed.

### Pump Relief:

- Opens at 150psi

### Weight:

- Approx. 125lbs (will vary depending on options)

### Dimensions:

- Approx. 31"L x 23"W x 47"H

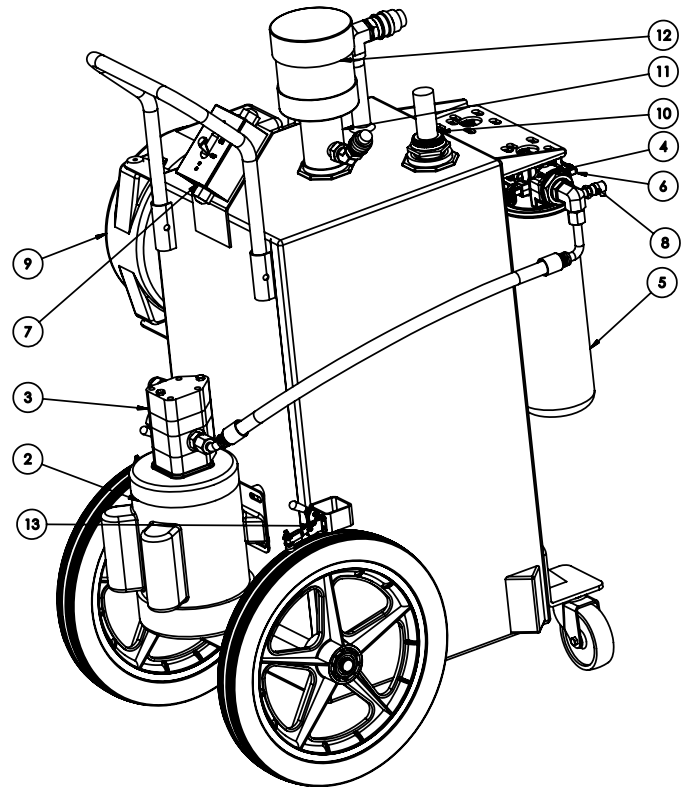
## Replacement Elements:

Part Number	BETA Rating	Desired Cleanliness Level (ISO Code)
P1066	$\beta_{4(c)}=2000$	14/12/9 - 13/11/8
P1065	$\beta_{7(c)}=2000$	18/16/13 - 15/13/10
P1063	$\beta_{10(c)}=1000$	19/17/14 - 18/16/13
P1064	$\beta_{25(c)}=2000$	20/18/15 - 19/17/14
P1048WR	Water Removal	

All D Series elements measure 5" x 14".

## Components:

Item Number	Description	Qty.
1	Tank	1
2	Motor	1
3	Pump	1
4	Filter Head	2
5	Filter Element	2
6	Filter Indicator	2
7	Switch On/Off	1
8	Sample Port	2
9	Cord Reel	1
10	Sight Gauge	1
11	Breather Adapter	1
12	Breather	1
13	Brake	2



# ForFluids.com

1-630-922-5020

# D SERIES FILTER CART



## Simple & Powerful!

The Y2K HT-D Series Filter Cart is our signature filter cart and is an excellent choice for “off-line” filtration in a wide variety of settings. Extremely mobile and lightweight, this filter cart has all the power needed for filtering oil viscosities up to 600cSt (ISO VG 680). This filter cart is completely customizable to fit all of your needs.

## Typical Applications

- Filtering contaminated systems
- Flushing new or repaired systems
- Pre-filtering new oil
- Transferring oils
- Topping off reservoirs
- Collecting oil samples for analysis
- Dispensing new oil

# ForFluids.com

# D SERIES FILTER CART

Don't see the options you need?  
Contact For Fluids at 1(630) 922-5020  
for more information.

## Performance:

For filtering mineral and synthetic based oils (hydraulic oils, gear oils and turbine oils) with a maximum operating viscosity range of ISO VG 680 (3000ssu/648cSt) at 100 °F within ambient temperature ranges of -15 °F to 150 °F.

## Standard Features:

### Materials:

- Frame: Carbon steel with drip pan
- Paint: Industrial powder coat; various colors available
- Motor: 1HP, 115vac, 60Hz or Pneumatic
- Filter Heads: Medium pressure, cast aluminum heads
- Pump: Heavy duty, cast steel gear pump. Available in 1, 2, 5 and 10 GPM
- Connections: Various quick connect options available
- Hoses: Clear PVC, steel reinforced hose or hydraulic hose
- Power Switch: Sealed on/off Power Switch

### Filter Indicators:

- Slide bar indicator triggers at 50psid when elements need to be changed.

### Pump Relief:

- Opens at 150psi

### Weight:

- Approx. 125lbs (will vary depending on options)

### Dimensions:

- Approx. 23"L x 22"W x 52"H

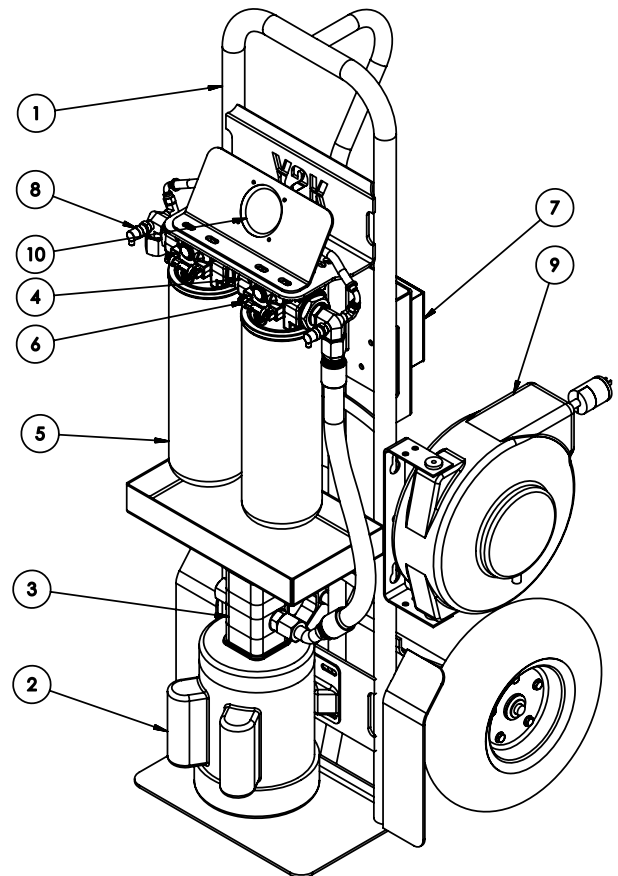
## Replacement Elements:

Part Number	BETA Rating	Desired Cleanliness Level (ISO Code)
P1066	$\beta_{4(c)}=2000$	14/12/9 - 13/11/8
P1065	$\beta_{7(c)}=2000$	18/16/13 - 15/13/10
P1063	$\beta_{10(c)}=1000$	19/17/14 - 18/16/13
P1064	$\beta_{25(c)}=2000$	20/18/15 - 19/17/14
P1048WR	Water Removal	

All D Series elements measure 5" x 14".

## Components:

Item Number	Description	Qty.
1	Frame	1
2	Motor	1
3	Pump	1
4	Filter Head	2
5	Filter Element	2
6	Filter Indicator	2
7	Switch On/Off	1
8	Sample Port	2
9	Cord Reel	1
10	Differential Gauge	1



# ForFluids.com

1-630-922-5020

# D SERIES TANDEM FILTER CART



## Two Filter Carts in One!

When you need multiple filter carts but, don't have the budget or the space, look no further than the TH-D Tandem cart. This cart is two filter carts in one which allows you to filter two different oil types using a single cart - saving time and money. Extremely mobile, this filter cart has all the power needed for filtering oil viscosities up to 600cSt (ISO VG 680) at 100F within ambient temperature ranges of -15F to 150F.

## Typical Applications

- Filtering contaminated systems
- Flushing new or repaired systems
- Pre-filtering new oil
- Transferring oils
- Topping off reservoirs
- Collecting oil samples for analysis
- Dispensing new oil

# ForFluids.com

# D SERIES TANDEM FILTER CART

Don't see the options you need?  
Contact For Fluids at 1(630) 922-5020  
for more information.

## Performance:

For filtering mineral and synthetic based oils (hydraulic oils, gear oils and turbine oils) with a maximum operating viscosity range of ISO VG 680 (3000ssu/648cSt) at 100 °F within ambient temperature ranges of -15 °F to 150 °F.

## Standard Features:

### Materials:

- Frame: Carbon steel
- Paint: Multiple color options available
- Motor: 1HP, 115vac, 60Hz or Pneumatic
- Filter Heads: Medium pressure, cast aluminum heads
- Pump: Heavy duty, cast steel gear pump. Available in 1, 2, 5 and 10 GPM
- Connections: Various quick connect options available
- Hoses: 7ft. Clear PVC, steel reinforced hose or hydraulic hose
- Power Switch: Sealed On/Off Power Switch

### Filter Indicators:

- Slide bar indicator triggers at 50psid when elements need to be changed.

### Pump Relief:

- Opens at 150psi

### Weight:

- Approx. 200lbs (will vary depending on options)

### Dimensions:

- Approx. 23"L x 22"W x 52"H

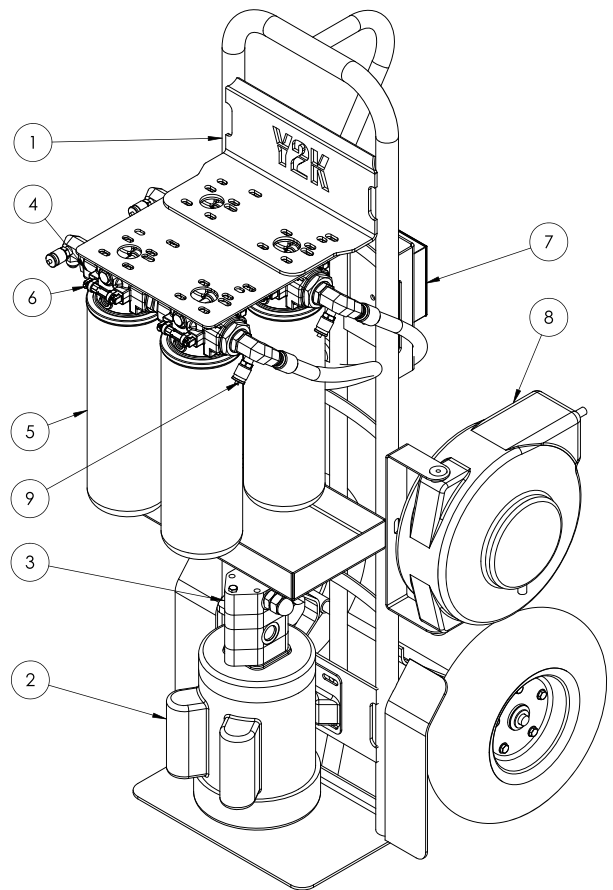
## Replacement Elements:

Part Number	BETA Rating	Desired Cleanliness Level (ISO Code)
P1066	$\beta_{4(c)}=2000$	14/12/9 - 13/11/8
P1065	$\beta_{7(c)}=2000$	18/16/13 - 15/13/10
P1063	$\beta_{10(c)}=1000$	19/17/14 - 18/16/13
P1064	$\beta_{25(c)}=2000$	20/18/15 - 19/17/14
P1048WR	Water Removal	

All D Series elements measure 5" x 14".

## Components:

Item Number	Description	Qty.
1	Frame	1
2	Motor	1
3	Pump	1
4	Filter Head	4
5	Filter Element	4
6	Filter Indicator	4
7	Switch On/Off	1
8	Cord Reel	1
9	Filter Selector Valve	1



# ForFluids.com

1-630-922-5020

# D SERIES PLATFORM CART

## Designed to Accommodate Various Tanks!

Getting oil from bulk or drum storage and out into the plant is made convenient and easy with the PT-D Platform Cart. Designed to accommodate various tank configurations, the platform cart can be used to deliver multiple oil types to their final destination. An optional oil rack and toolbox makes storage of essential equipment and tools easy to transport. The platform cart has all the power needed for filtering oil viscosities up to 600cSt (ISO VG 680) at 100F within ambient temperature ranges of -15F to 150F. All Y2K products are 100% customizable upon request.



## Typical Applications

- Pre-filtering new oil
- Transferring oils
- Topping off reservoirs or containers
- Dispensing new oil
- Waste oil extraction

# ForFluids.com

1-630-922-5020



# D SERIES PLATFORM CART

Don't see the options you need?  
Contact For Fluids at 1(630) 922-5020  
for more information.

## Performance:

For filtering mineral and synthetic based oils (hydraulic oils, gear oils and turbine oils). This powerhouse has the ability to filter oil viscosities up to 600cSt (ISO VG 680) at 100F within ambient temperature ranges of -15F to 150F.

## Standard Features:

### Materials:

- Frame: Carbon steel platform frame with drip pan & utility tray
- Paint: Multiple color options available
- Tank(s): 32, 71 and 115 gallon poly tanks available
- Motor: 1HP, 115vac, 60Hz or Pneumatic
- Filter Heads: Medium pressure, cast aluminum heads
- Pump: Heavy duty, cast steel gear pump. Available in 1, 2, 5 and 10 GPM
- Connections: Various quick connect options available
- Hoses: 7ft. Clear PVC, steel reinforced hose or hydraulic hose
- Power Switch: Sealed On/Off Power Switch

### Filter Indicators:

- Slide bar indicator triggers at 50psid when elements need to be changed.

### Pump Relief:

- Opens at 150psi

### Weight:

- Approx. 250lbs (will vary depending on options)

### Dimensions:

- Approx. 55"L x 24"W x 52"H (dual tank, dual elements)

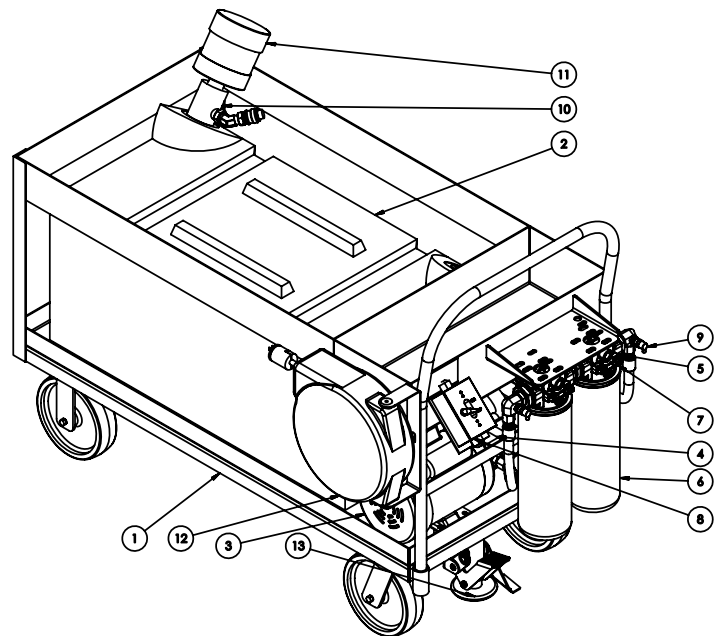
## Replacement Elements:

Part Number	BETA Rating	Desired Cleanliness Level (ISO Code)
P1066	$\beta_{4(c)}=2000$	14/12/9 - 13/11/8
P1065	$\beta_{7(c)}=2000$	18/16/13 - 15/13/10
P1063	$\beta_{10(c)}=1000$	19/17/14 - 18/16/13
P1064	$\beta_{25(c)}=2000$	20/18/15 - 19/17/14
P1048WR	Water Removal	

All D Series elements measure 5" x 14".

## Components:

Item Number	Description	Qty.
1	Heavy Duty Cart	1
2	Tank	1
3	Motor	1
4	Pump	1
5	Filter Head	2
6	Filter Element	2
7	Filter Indicator	2
8	Switch On/Off	1
9	Sample Port	2
10	Breather Adapter	1
11	Breather	1
12	Cord Reel	1
13	Parking Brake	1



# ForFluids.com

1-630-922-5020

**ForFluids.com**

ForFluids.com  
Division of EDM Zap  
1108 Front Street - Lisle IL 60532 USA  
Phone: 1-630-922-5020  
Fax: 1-630-852-3678  
[www.ForFluids.com](http://www.ForFluids.com)  
[info@ForFluids.com](mailto:info@ForFluids.com)

